

The SEITZ SOLUTION[®]

Radial Head Off-The-Shelf Implant System

For Off-The-Shelf Consignment

Radial Head Implants



U.S. Patent 8,353,965

- \$800 to \$1000 Less Than All Competitors
- Off-The-Shelf Consignment
- Custom Orders Available
- Patented Spacer to Adjust Osteotomy

SURGICAL TECHNIQUE

The radial head is applied to the stem in standard modular technique

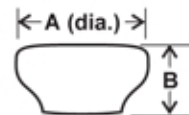


INDICATIONS:

Indications for use of the radial head prosthesis include radial head fracture not amenable to fixation, radio capitellar arthropathy due to degeneration or malunion of a radial head fracture, complex fracture dislocation of the elbow with loss of radial head support and Essex-Lopresti fracture-dislocation with loss of the radial head, rupture of the interosseous membrane and disruption of the distal radio ulnar joint. In these cases, Landsman and Seitz have shown silastic to be inadequate, metallic replacement to be stable and biologic reconstruction to be promising but unproven and with the potential for high degree of complications.

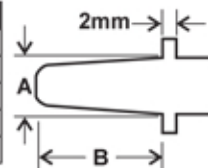
Radial Head

Size Ax B	Catalog #
18x9mm	KCHI-1809
18x11mm	KCHI-1811
18x13mm	KCHI-1813
20x10mm	KCHI-2010
20x12mm	KCHI-2012
20x14mm	KCHI-2014
23x11mm	KCHI-2311
23x13mm	KCHI-2313
23x15mm	KCHI-2315
26x12mm	KCHI-2612
26x14mm	KCHI-2614
26x16mm	KCHI-2616



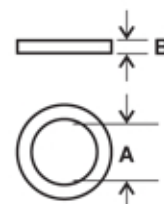
Radial Head Stem

Size Ax B	Catalog #
5x19mm	KCSI-519
6x21mm	KCSI-621
7x22mm	KCSI-722
8x24mm	KCSI-824
9x25.5mm	KCSI-925

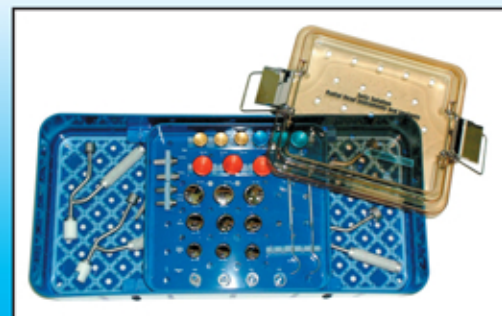


Radial Head Spacer

Size Ax B	Catalog #
5x1mm	KCW-51
5x2mm	KCW-52
6x1mm	KCW-61
6x2mm	KCW-62
7x1mm	KCW-71
7x2mm	KCW-72
8x1mm	KCW-81
8x2mm	KCW-82
9x1mm	KCW-91
9x2mm	KCW-92



IMPLANTS & INSTRUMENTS



KAPP SURGICAL INSTRUMENT, INC

4919 Warrensville Center Rd., Cleveland OH 44128
 Phone: 216.587.4400 / 1.800.282.KAPP / Fax: 216.587.0411
 email: Info@kappsurgical.com website: www.kappsurgical.com

The SEITZ SOLUTION[®] Ulnar Head Off-The-Shelf Implant System

For Off-The-Shelf Consignment

Ulnar Head
Implants



U.S. Patent 8,353,965

- \$800 to \$1000 Less Than All Competitors
- Off-The-Shelf Consignment
- Custom Orders Available
- Patented Spacer to Adjust Osteotomy



"The Patient Match implant philosophy has the metal conforming to the bone as opposed to the off-the-shelf implant which has the bone surgically altered to meet the metal. The Seitz Solution[®] Implants are individually designed to fit the patient's anatomic bone structure."

William H. Seitz, Jr., M.D.

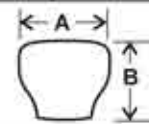
Cleveland Orthopedic and Spine Hospital at Lutheran
Cleveland Clinic Foundation, Cleveland, Ohio

INDICATIONS:

Indications for use of this Ulnar Head Prostheses include ulnar head fractures not amenable to fixation, complex fracture of the wrist, rheumatoid arthritis with instability and with synovectomy.

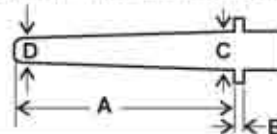
Catalog #	A (dia.)	B
KCUH-1314	14.0mm	13.5mm
KCUH-1515	15.5mm	15.0mm
KCUH-1617	17.0mm	16.5mm

Ulnar Head



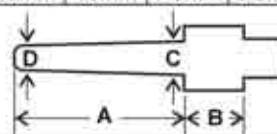
Catalog #	A	B	C	D
KCUS-5254	52mm	2mm	5mm	4mm
KCUS-5265	52mm	2mm	6.5mm	5.5mm
KCUS-5276	52mm	2mm	7.5mm	6.5mm

Ulnar Stem



Catalog #	A	B	C	D
KCUC-4854	48mm	18mm	5mm	4mm
KCUC-4865	48mm	18mm	6.5mm	5.5mm
KCUC-4876	48mm	18mm	7.5mm	6.5mm

Ulnar
Collared
Stem



Ulnar Spacer	Size AxB	Catalog #
	5x1mm	KSC-51
	5x2mm	KSC-52
	6.5x1mm	KSC-61
	6.5x2mm	KSC-62
	7.5x1mm	KSC-71
	7.5x2mm	KSC-72

SURGICAL TECHNIQUE

- Broach canal
- Impact stem
- Apply head
- Mobilize/close capsule
- Reinforce with strip of retinaculum
- Bring 6th compartment dorsal to ulna



IMPLANTS & INSTRUMENTS



KAPP SURGICAL INSTRUMENT, INC

4919 Warrensville Center Rd., Cleveland OH 44128
Phone: 216.587.4400 / 1.800.282.KAPP / Fax: 216.587.0411
email: Info@kappsurgical.com website: www.kappsurgical.com